



## BioFlo DuraMax Catheter with Endexo Technology

**90%**  
**LESS THROMBUS  
ACCUMULATION**  
COMPARED TO  
UNCOATED CATHETERS  
(based on platelet count)\*

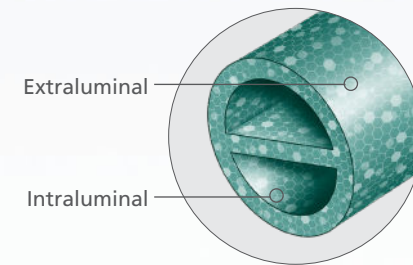


# Proven to Reduce Thrombus Accumulation, In Vitro<sup>†</sup>

The BioFlo<sup>®</sup> DuraMax<sup>®</sup> Catheter is the first dialysis catheter with Endexo<sup>®</sup> Technology, providing a catheter material more resistant to in-vitro thrombus accumulation, compared to commonly used catheters (based on platelet count).<sup>†</sup>

The BioFlo DuraMax Catheter provides long term access to the peripheral venous system for hemodialysis sessions. The BioFlo DuraMax Catheter features Endexo Technology which is present throughout the entire blood pathway including the intraluminal and extraluminal surfaces of the catheter.

- BioFlo DuraMax dialysis catheter has 84% less thrombus accumulation on its surface in-vitro compared to non-coated Palindrome chronic dialysis catheters (based on platelet count).<sup>†</sup>

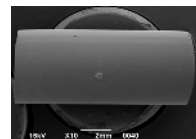


## BioFlo DuraMax Catheter with Endexo Technology



Catheter has minimal visible thrombus, fibrin sheath, or clot.

SEM Image (Scanning Electron Microscopy)  
BioFlo DuraMax Dialysis Catheter with Endexo Technology at 10x magnification



## Palindrome H Chronic Dialysis Catheter



SEM Image (Scanning Electron Microscopy)  
Palindrome H Chronic Dialysis Catheter at 10x Magnification



BioFlo DuraMax Catheter with Endexo Technology

**83.5%**  
**LESS THROMBUS ACCUMULATION**

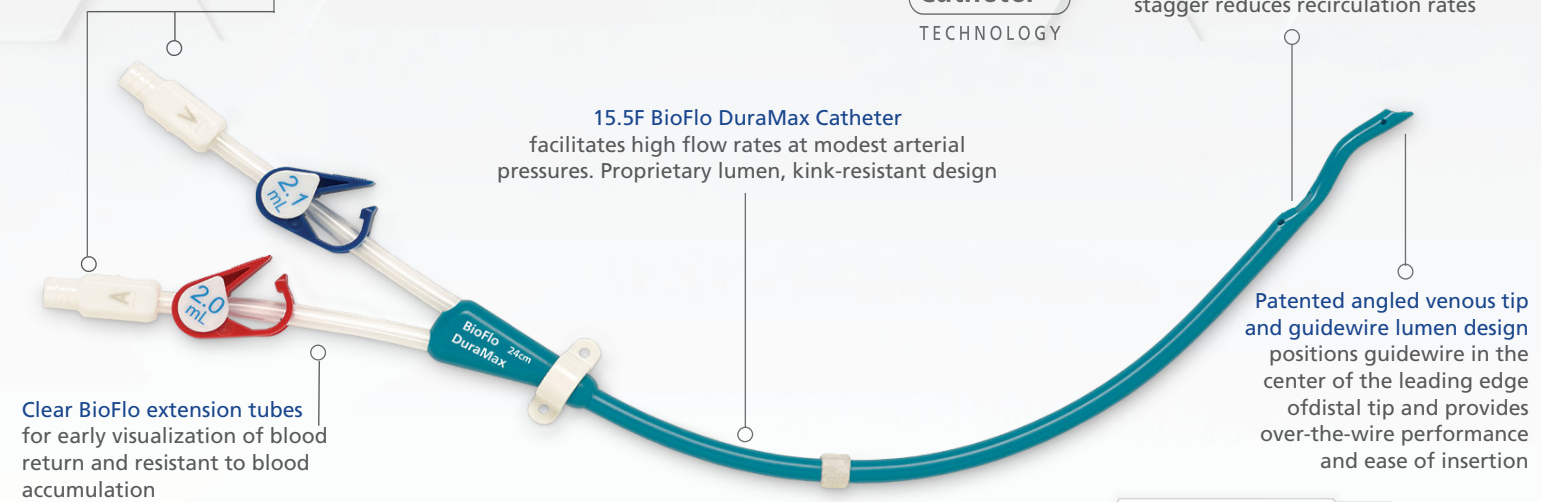
Compared to Palindrome H Chronic Dialysis Catheter (based on platelet count)<sup>†</sup>

## BioFlo DuraMax Catheter

Thermoplastic polyurethane luers combine toughness, dimensional stability, and chemical resistance

**Curved Tip Catheter**  
TECHNOLOGY

Curved Tip catheter technology reduces vein wall apposition and risk of arterial insufficiency. 3 cm tip stagger reduces recirculation rates



## BioFlo DuraMax Catheter

Advanced features, such as large lumen diameters and thrombus reduction Endexo technology allow the BioFlo DuraMax Catheter to deliver high flow rates at modest pressures.

### Average Pressure vs. Flow Rates\*

Length (cm)	Pressure at Flow (mm Hg)					
	200 ml/min		300 ml/min		400 ml/min	
	A	V	A	V	A	V
24 cm	-53	54	-73	84	-120	128
28 cm	-59	59	-86	90	-135	134
32 cm	-60	64	-92	97	-144	143
40 cm	-66	72	-107	108	-164	157
55 cm	-83	86	-133	127	-157	179

BIOFLO DURAMAX CATHETER

**30.3%**

REDUCTION IN PRESSURE  
Compared to Palindrome Chronic Dialysis Catheter\*

<sup>†</sup>The reduction in thrombus accumulation (based on platelet count) is supported by acute in-vitro benchtop testing performed up to two hours using bovine blood. Pre-clinical in-vitro evaluations do not necessarily predict clinical performance with respect to thrombus formation. Data on file.

\*Data on file

# Competitive Kit Offerings for Patient Care

BioFlo DuraMax Catheters are available in a variety of options for safe and reliable insertion.

## KIT CONFIGURATIONS INCLUDE:

### BASIC KIT

(1) BioFlo DuraMax Dialysis Catheter with Endexo Technology, (1) 16F Valved Breakaway Introducer, (1) 12F Dilator, (1) 14F Dilator, (1) Tri-Ball Tunneler with Sleeve, (2) Injection Caps, (1) #11 Blade Safety Scalpel, (1) 0.038" J/Flex Guidewire, (1) Adhesive Wound Dressing, (1) 18 G x 2-3/4" Introducer Needle

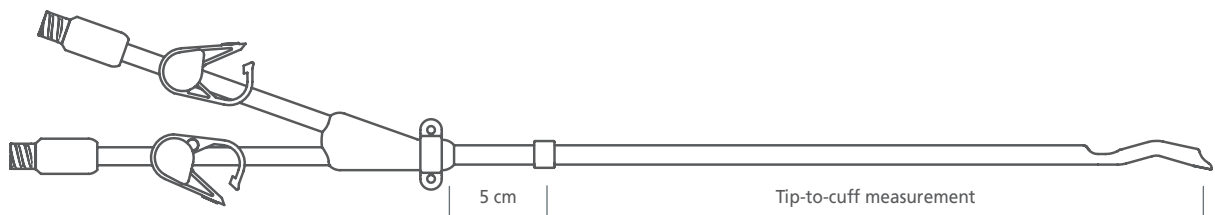
### VASCPAK\* KIT

(1) BioFlo DuraMax Dialysis Catheter with Endexo Technology, (1) Adhesive Wound Dressing, (1) 16F Valved Peelable Sheath, (1) Tri-Ball Tunneler with Sleeve, (2) Injection Caps, (1) 12F Vessel Dilator, (1) 14F Vessel Dilator

### CATHETER ONLY KIT

(5) BioFlo DuraMax Dialysis Catheters with Endexo Technology.

## Catheter Length Measurement (not drawn to scale)



## BioFlo DuraMax Catheter—Ordering Information

Catheter Length	Tip-to-cuff	Dual Valve Basic Kit	Dual Valve VascPak	Single Valve Basic	Single Valve VascPak	Catheter Only
20 cm	15 cm	H965103028011	H965103028161	H965103038011	H965103038161	H965103029011
22 cm	17 cm	H965103028021	H965103028171	H965103038021	H965103038171	H965103029021
24 cm	19 cm	H965103028031	H965103028181	H965103038031	H965103038181	H965103029031
28 cm	23 cm	H965103028041	H965103028191	H965103038041	H965103038191	H965103029041
32 cm	27 cm	H965103028051	H965103028201	H965103038051	H965103038201	H965103029051
36 cm	31 cm	H965103028061	H965103028211	H965103038061	H965103038211	H965103029061
40 cm	35 cm	H965103028070	H965103028220	H965103038070	H965103038220	H965103029071
48 cm	43 cm	H965103028080	H965103028230	H965103038080	H965103038230	H965103029081
55 cm	50 cm	H965103028090	H965103028240	H965103038090	H965103038240	H965103029091

Consult your AngioDynamics representative for country specific product availability.

### IMPORTANT RISK INFORMATION

#### BIOFLO DURAMAX DIALYSIS CATHETER WITH ENDEXO TECHNOLOGY

**INDICATIONS FOR USE:** The BioFlo DuraMax Dialysis Catheter with Endexo Technology is indicated for use in attaining long-term vascular access for hemodialysis and apheresis in adults. Catheters greater than 40 cm are intended for femoral vein insertion.

**CONTRAINDICATIONS:** The catheter is intended for long-term vascular access only and should not be used for any purpose other than indicated in the instructions for use.

**WARNINGS AND PRECAUTIONS:** Please see package insert for complete list of warnings and precautions.

**POTENTIAL COMPLICATIONS:** Consult package insert for a complete list of potential complications. Indications, contraindications, warnings and instructions for use can be found in the instructions for use supplied with each device. Observe all instructions prior to use. Failure to do so may result in patient complications.

**CAUTION:** Federal Law (USA) restricts this device to sale by or on the order of a physician.



USA > 14 Plaza Drive, Latham, NY 12110 > tel: 800-772-6446 or 518-798-1215 > fax: 518-798-1360  
 International > Haaksbergweg 75 (Margrietoren), 1101 BR, Amsterdam Z-O > The Netherlands  
 tel: +31 (0)20 753 2949 > fax: +31 (0)20 753 2939

[www.angiodynamics.com](http://www.angiodynamics.com)

\*AngioDynamics, the AngioDynamics logo, BioFlo, the BioFlo logo, DuraMax and VascPak are trademarks and/or registered trademarks of AngioDynamics, Inc., an affiliate or a subsidiary. Endexo is a trademark and/or registered trademark of Interface Biologics, Inc. All other trademarks are property of their respective owners. © 2017 AngioDynamics, Inc. ANGB 255 GL Rev 01 11/17