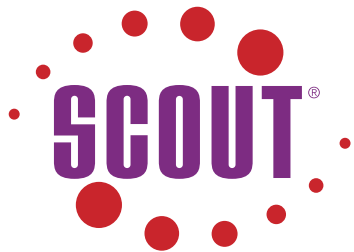


SCOUT[®] REPORT



News and Views on Surgical Guidance
and Breast Tumor Localization

Merit Medical Receives FDA Breakthrough Device Designation for the New SCOUT MD[™] Surgical Guidance System



The SCOUT MD is the latest in Merit's ongoing commitment and leadership in advancing oncology care. SCOUT MD expands Merit's portfolio of products to optimize oncology for breast and other soft tissue cancers, which includes the [SCOUT Radar Localization system](#) with new [SCOUT Mini Reflector](#) and [SCOUT Bx[™] Delivery System](#), and the [SAVI[®] Brachy System](#).

A first of its kind, the SCOUT MD localization system supports implantation of up to four unique reflector configurations. When implanted within abnormal breast or other soft tissue, the reflectors enable surgeons to pinpoint tumor location in multiple dimensions for more precise excision, minimizing trauma to healthy tissue and helping to reduce the likelihood of re-excision and the emotional and physical pain associated with a second surgery.

[Read the Full Press Release](#)

SCOUT Access Guide Launches Globally

SCOUT's global influence expands as the Access Guide makes its way to Australia.

The SCOUT Access Guide provides:

- Ease of localization through small incisions
- Support of oncoplastic surgical approaches
- Utility for lymph node dissection

[Learn More](#)



CLINICAL UTILITY AND MILLIMETERS MATTER



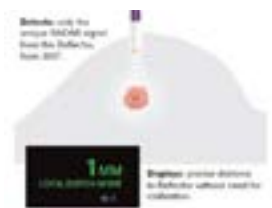
PRECISE LOCALIZATION

SCOUT has a detection accuracy of ± 1 mm.



DETECTION ACCURACY AND DEPTH CAPABILITY

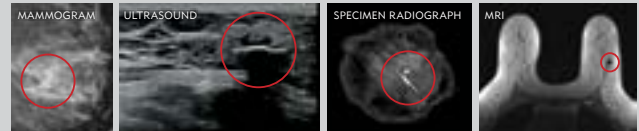
The SCOUT Guide provides 360° detection of the reflector and a detection depth of 60mm regardless of the relationship between the Guide and the Reflector.



EASE OF USE

SCOUT offers reliable, real-time distance measurements without signal interference from metal objects, and requires no system calibration.

CLINICALLY INSIGNIFICANT MRI ARTIFACT



SCOUT's Reflector produces a clinically insignificant MRI Artifact, allowing it to be placed at biopsy or prior to neoadjuvant chemotherapy with no interference on MRI scans. With the recent release of SCOUT Bx, SCOUT is the only wire-free localization device that can be placed at time of biopsy under stereotactic or MRI guidance.



[Discover More](#)



ONCOLOGY

Have Questions?

EMAIL US AT alisoviejoinfo@merit.com



Understand. Innovate. Deliver.™

merit.com

Merit Medical Systems, Inc.
1600 West Merit Parkway
South Jordan, Utah 84095
1.801.253.1600
1.800.35.MERIT

Merit Medical Europe, Middle
East & Africa (EMEA)
Amerikalaan 42, 6199 AE
Maastricht-Airport
The Netherlands
+31 43 358 82 22

Merit Medical Ireland Ltd.
Parkmore Business Park West
Galway, Ireland
+353 (0) 91 703 733

©2023 Merit Medical Systems, Inc. All rights reserved