



Breast Biopsy with Placement of SCOUT® Reflector

Mary K. Hayes, MD

Chief, Women's Imaging, Memorial Regional Hospital
Envision Physician Services

Heather Wright, MD, FACS

Medical Director, Breast Cancer Services,
Memorial Healthcare System

Mayra Frau, MD

Chief, Women's Imaging, Memorial Hospital West
Envision Physician Services

Patient: 50-year-old female

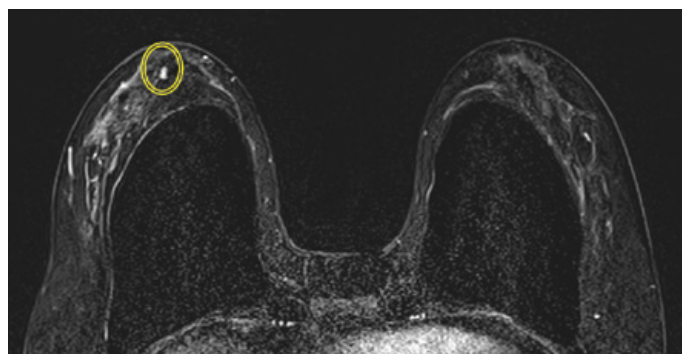
Diagnosis: Bloody nipple discharge

Rx: Breast biopsy with placement of SCOUT reflector

Challenge: Streamlining redundant multi-day appointments with multiple image guided breast interventions into single-day appointment workflow

Patient History

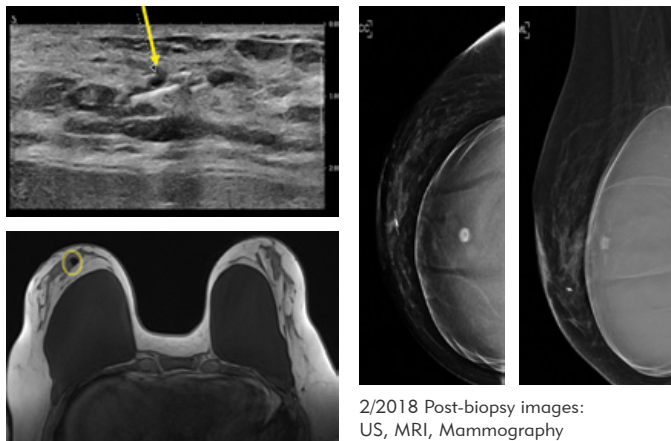
A 50-year-old female with saline implants underwent routine screening mammogram/ultrasound in December 2017. This showed cystic mastopathy and no suspicious abnormalities. Follow up routine physical exam revealed a single orifice pathologic (bloody) right nipple discharge. February 2018 workup with breast MRI showed a right retroareolar 7 mm enhancing breast mass. The surgeon requested a streamlined single day breast imaging and intervention appointment to include: 1) a targeted right retroareolar second-look ultrasound, 2) ultrasound-guided biopsy of the right breast mass, and 3) placement of a SCOUT reflector to guide surgery.



2/2018 MRI Right Retroareolar 7mm mass

Biopsy with Reflector Placement

During the streamlined appointment in February 2018, the second-look ultrasound revealed a mass in the right retroareolar breast, and was felt to correspond to the MRI finding. The patient was immediately forwarded for ultrasound-directed core



2/2018 Post-biopsy images:
US, MRI, Mammography

needle biopsy with SCOUT localization to serve as both a clip and localization device.

Post-procedure mammography and MRI (non-contrast clip series) confirmed that the biopsied lesion, marked with SCOUT correlated with the MRI finding and that the implant remained intact. Pathology of the biopsy was a sclerosing intraductal papilloma.

Surgery

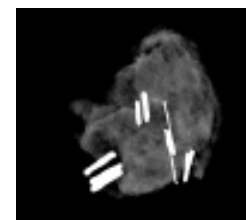
In April 2018, the surgeon performed right breast excision of the symptomatic papilloma via SCOUT localization. Since the tumor was located retroareolar and the patient was concerned with cosmesis and wanted to maintain an intact breast implant, a single periareolar incision was used to minimize surgical scar. The 6x7 mm papilloma tumor was excised using the SCOUT surgical guidance system. Implant was intact.

Pathology

The pathology report of the surgical excision documented removal of a 0.7 cm sclerosing intraductal papilloma.

Postoperative Course

The patient recovered well with no complications. The single periareolar incision allowed for minimal scar and excellent cosmetic outcome.



4/2018 Specimen X-ray

Conclusion

The surgeon and radiologists utilized a same day streamlined image-guided interventional care plan to optimize workflow for the patient and the treating teams. This streamlined the patient care approach, minimized redundant multi-day image guided interventions and provided the surgeon with an optimal approach for incision, excision, and best cosmesis with an intact implant for the patient.



ciannamedical.com/savi-scout
merit.com

The foregoing case and other information are for the practitioner's convenience and for general information purposes only. This information does not constitute medical or legal advice, nor is it meant to endorse or guarantee the suitability of any of the referenced products or methods for any specific patient or procedure. Before using any product, refer to the Instructions for Use (IFU) for indications, contraindications, warnings, precautions, and directions for use.